



Offshore Wind Power Limited

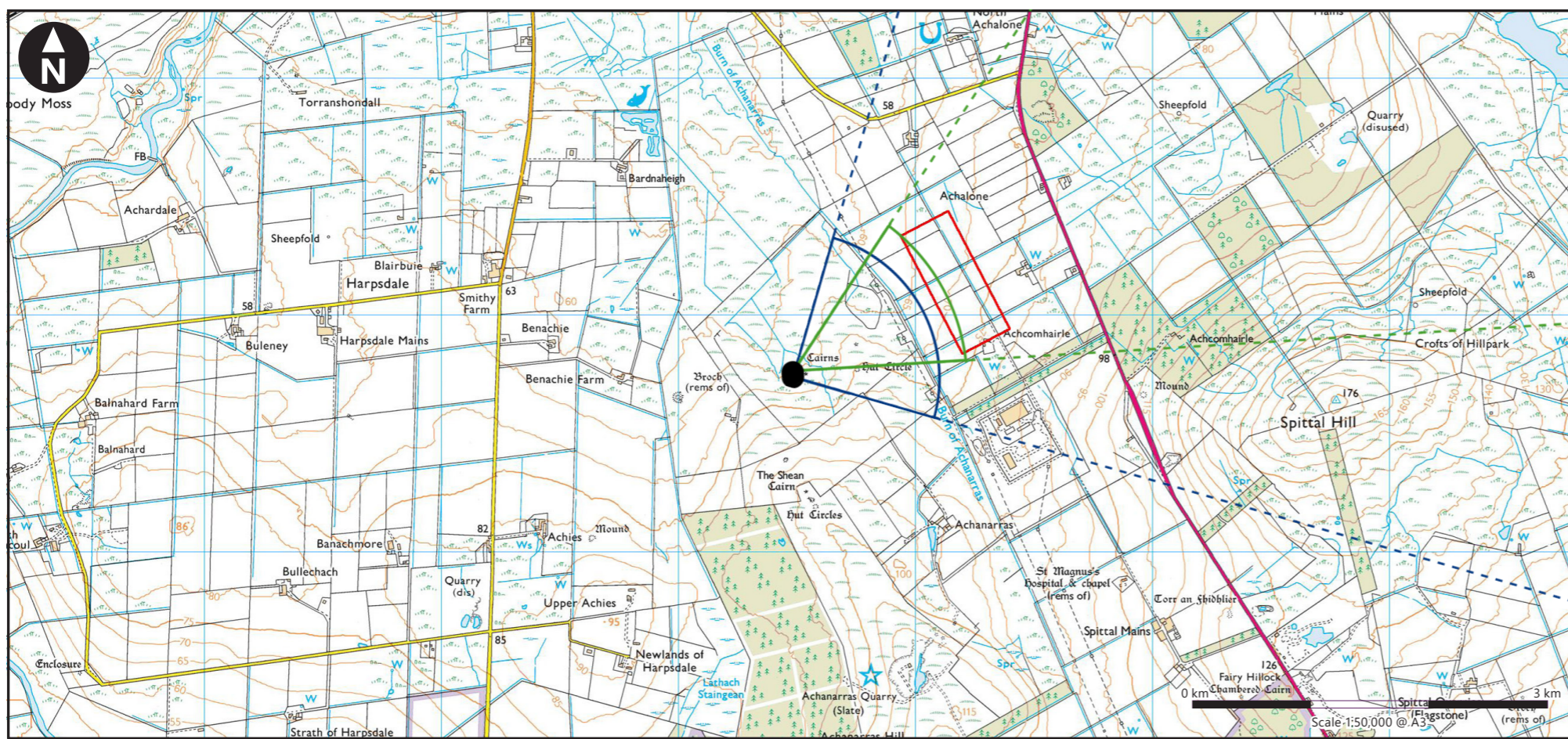
West of Orkney Onshore EIA Report

Volume 2, Supporting Study 19: Terrestrial Archaeology
Onshore Setting Supporting Visualisations (NatureScot
and The Highland Council)

WO1-WOW-CON-EV-RP-0119: Approved by S.Kerr
Document Control 20/10/2023

ASSIGNMENT L100632-S06
DOCUMENT L-100632-S06-A-REPT-022

\\uk.wspgroup.com\central data\Projects\70090xxx\70090532 - ScotWind Project Wildebeest\03 WIP\Onshore Visualisations\2023-07-14 - Updated Figures\VP7 NS Cairns 70102843-108-FG-SA-00007_R2.indd Originator: wilsc03



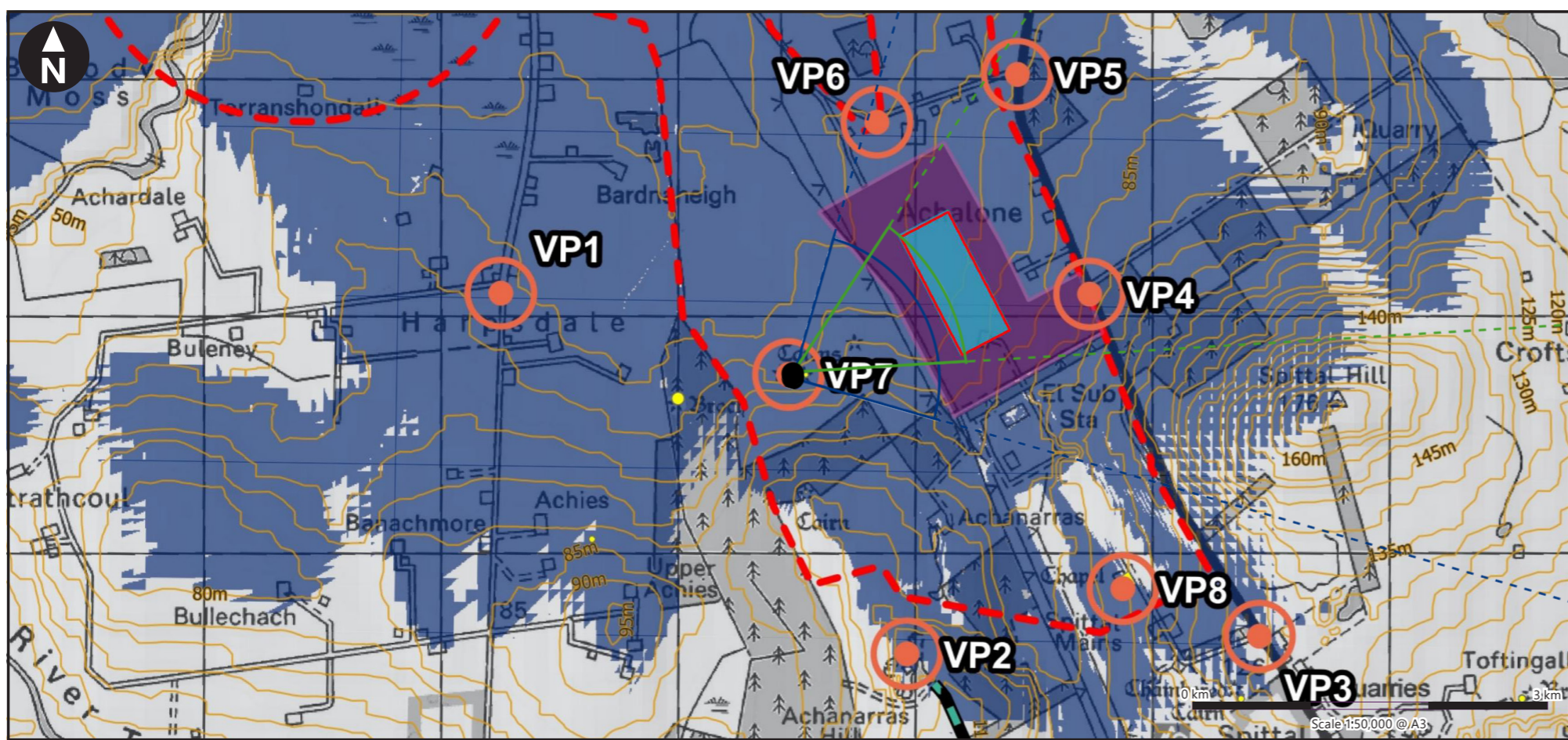
Viewpoint Parameters

OS reference: E314463, N955753
 Ground Level Elevation: 66.0 m AOD
 Camera Height: 1.5 m AGL
 Direction of view to site centre: 61
 Distance to The Site: 737 m
 Date and time of viewpoint photography: 22/03/2023 17:38
 Camera: Sony Alpha 7R III
 Lens: Sony FE 50mm F1.8

Information on the limitations of visualisations:

Visualisations have a number of limitations which you should be aware of when using them to form a judgement on the onshore substation. These include:

- The images provided give a reasonable impression of the scale of the onshore substation and the distance to the onshore substation, but can never be 100% accurate;
- The viewpoints illustrated are representative of views in the area, but cannot represent visibility at all locations;
- To form the best impression of the impacts of the onshore substation proposal these images are best viewed at the viewpoint location shown;
- The images must be printed at the right size to be viewed properly (260mm by 820mm);
- You should hold the images flat at a comfortable arm's length. If viewing these images on a wall or board at an exhibition, you should stand at arm's length from the image presented.
- The ZTV presented here takes no account of the screening effects of vegetation or buildings.



Additional notes:

1. This figure has been based on the Landscape Mitigation Plan which establishes the following parameters:
 - Indicative Development Platform is set at 70m AOD.
 - A maximum development height of 13.5m from AIS scenario.
2. Direction given as bearing relative to Grid North (BNG).
3. This figure is produced in accordance with SNH Visual Representation of Wind Farms 2017 guidance and also broadly accords with the Landscape Institute's Technical Guidance Note 6/19 (Type 4 Visualisation).



Client

Spittal Substation
EIA Report

Figure 17-VP7a
Viewpoint 7: Cairn 800m north-west of Achanarras
Location Plan

September 2023



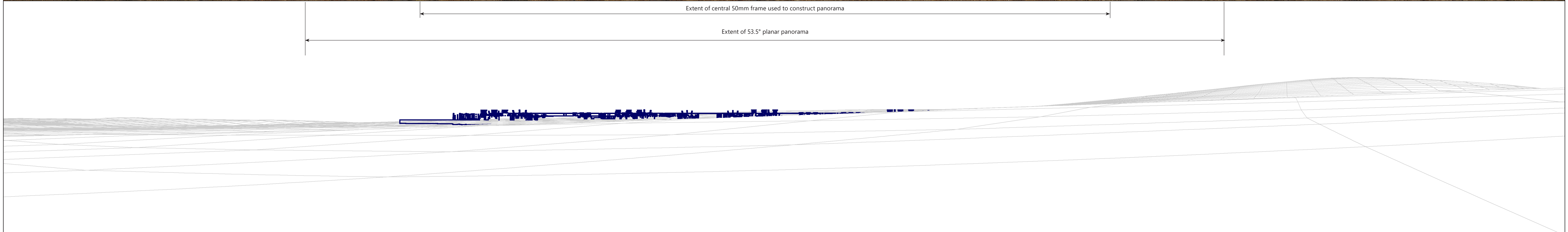
© Crown copyright. All rights reserved. Licence number 0100051659.

\uk.wspgroup.com\central_data\Projects\70090532 - ScotWind Project\Wireline\03 WIP Onshore Visualisations\2023-07-14 - Updated Figures\02 DRAWINGS\VP7 NS Cairns 70102943-108-FG-SA-00007_R2.rvt
 Originator: whisc03



Baseline photograph

This image provides landscape and visual context only



Wireline drawing

View flat at a comfortable arm's length

OS reference:	E314463, N955753	Horizontal field of view:	90° (cylindrical projection)	Camera:	Sony Alpha 7R III
Eye level:	66.0 m AOD	Principal distance:	522mm	Lens:	Sony FE 50mm F1.8
Direction of view:	61	Paper size:	841mm x 297mm (half A1)	Camera height:	1.5m AGL
Distance to Site:	737 m	Correct printed image size:	820 x 130mm	Date and time:	22/03/2023 17:38



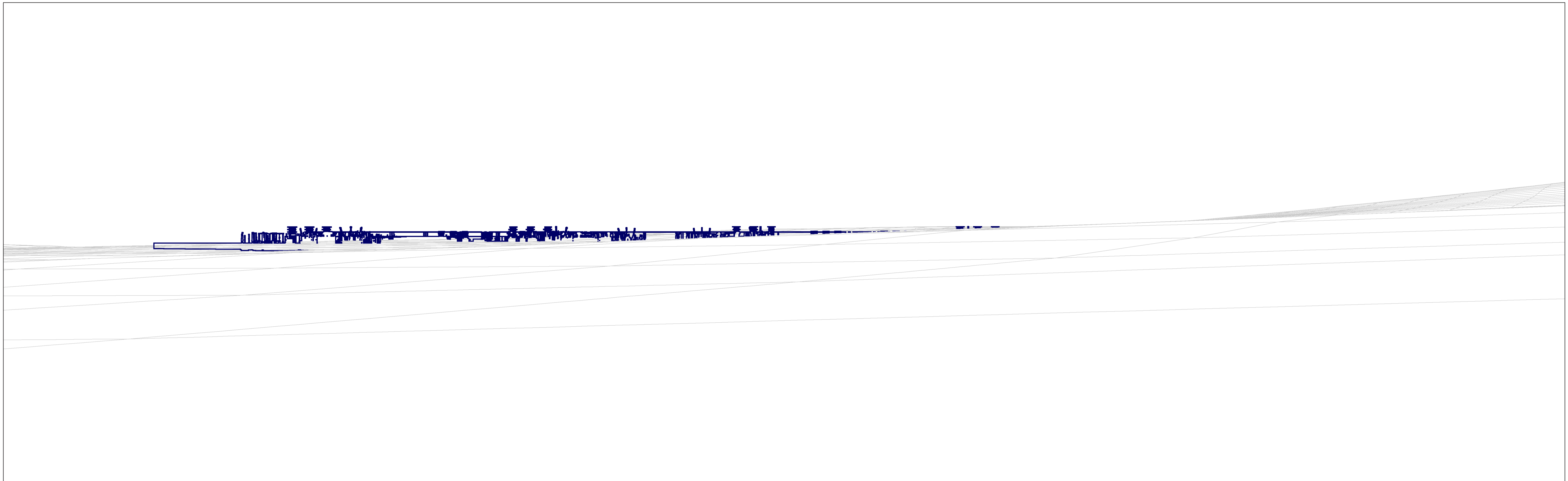
Client
Spittal Substation
EIA Report

Figure 17-VP7b
Viewpoint 7: Cairn 800m north-west of
Achanarras
Existing View and Wireline - 90°

September 2023



Originator: whs03
Updated Figures 02 DRAMINGS VP7 MS Cairns 70102943-108-FG-SA-00007_R2.rvt
W:\Projects\70090552 - ScotWind Project\Wildbeest\03 WIP Onshore Visualisations\2023-07-14 - Updated Figures\02 DRAMINGS VP7 MS Cairns 70102943-108-FG-SA-00007_R2.rvt



Wireline drawing

View flat at a comfortable arm's length

OS reference:	E314463, N955753	Horizontal field of view:	53.5° (planar projection)	Camera:	Sony Alpha 7R III
Eye level:	66.0 m AOD	Principal distance:	812.5mm	Lens:	Sony FE 50mm F1.8
Direction of view:	61	Paper size:	841mm x 297mm (half A1)	Camera height:	1.5m AGL
Distance to Site:	737 m	Correct printed image size:	820 x 260mm	Date and time:	22/03/2023 17:38



Client
Spittal Substation
EIA Report

Figure 17-VP7c
Viewpoint 7: Cairn 800m north-west of
Achanarras
Wireline - 53.5°

September 2023



Originator: whisc03
70102843-108-FG-SA-00007_R2.rvt
Updated Figures 02 DRAWINGS\VP7 NS Cairns 70102843-108-FG-SA-00007_R2.rvt
WIP Onshore Visualisations\2023-07-14 - Updated Figures 02
ScotWind Project Wildebeest\03 WIP Onshore Visualisations\2023-07-14 - Updated Figures 02
Project\1709090000\1709090532 - ScotWind Project Wildebeest\03 WIP Onshore Visualisations\2023-07-14 - Updated Figures 02
central\data\Project\1709090000\1709090532 - ScotWind Project Wildebeest\03 WIP Onshore Visualisations\2023-07-14 - Updated Figures 02



Photomontage

View flat at a comfortable arm's length

OS reference:	E314463, N955753	Horizontal field of view:	53.5° (planar projection)	Camera:	Sony Alpha 7R III
Eye level:	66.0 m AOD	Principal distance:	812.5mm	Lens:	Sony FE 50mm F1.8
Direction of view:	61	Paper size:	841mm x 297mm (half A1)	Camera height:	1.5m AGL
Distance to Site :	737 m	Correct printed image size:	820 x 260mm	Date and time:	22/03/2023 17:38



Client
Spittal Substation
EIA Report

Figure 17-VP7e
Viewpoint 7: Cairn 800m north-west of Achanarras
Year 15 Visualisation

September 2023





Figure 17-VP7f
Viewpoint 7 Cairn 800m north-west of Achanarras
Existing View - 50mm

Distance to the site: 737m

Camera: Sony Alpha 7R III

Focal Length: 50mm

Camera height: 1.5m

Date: 17:38 22/03/2023

When viewed at a comfortable arm's length (approx. 500mm), this printed image is representative of our detailed central vision, but is not representative of scale and distance



Figure 17-VP7g
Viewpoint 7 Cairn 800m north-west of Achanarras
Year 1 Visualisation - 50mm

Distance to the site: 737m Camera: Sony Alpha 7R III Focal Length: 50mm Camera height: 1.5m Date: 17:38 22/03/2023

When viewed at a comfortable arm's length (approx. 500mm), this printed image is representative of our detailed central vision, but is not representative of scale and distance



Figure 17-VP7h
Viewpoint 7 Cairn 800m north-west of Achanarras
Year 15 Visualisation - 50mm

Distance to the site: 737m Camera: Sony Alpha 7R III Focal Length: 50mm Camera height: 1.5m Date: 17:38 22/03/2023

When viewed at a comfortable arm's length (approx. 500mm), this printed image is representative of our detailed central vision, but is not representative of scale and distance



Figure 17-VP7i
Viewpoint 7 Cairn 800m north-west of Achanarras
Existing View - 75mm

Distance to the site: 737m Camera: Sony Alpha 7R III Focal Length: 75mm Camera height: 1.5m Date: 17:38 22/03/2023

When viewed at a comfortable arm's length (approx. 500mm), this printed image is representative of our detailed central vision, but is not representative of scale and distance



Figure 17-VP7j
Viewpoint 7 Cairn 800m north-west of Achanarras
Year 1 Visualisation - 75mm

Distance to the site: 737m Camera: Sony Alpha 7R III Focal Length: 75mm Camera height: 1.5m Date: 17:38 22/03/2023

When viewed at a comfortable arm's length (approx. 500mm), this printed image is representative of our detailed central vision, but is not representative of scale and distance



Figure 17-VP7k
Viewpoint 7 Cairn 800m north-west of Achanarras
Year 15 Visualisation - 75mm

Distance to the site: 737m

Camera: Sony Alpha 7R III

Focal Length: 75mm

Camera height: 1.5m

Date: 17:38 22/03/2023

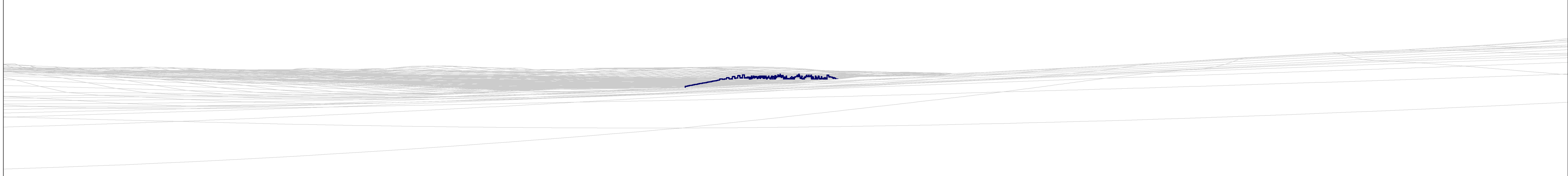
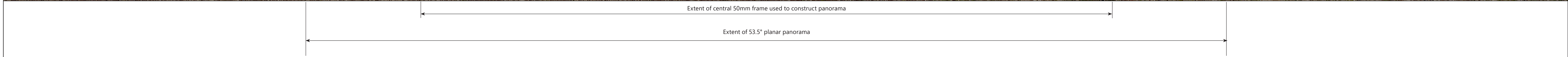
When viewed at a comfortable arm's length (approx. 500mm), this printed image is representative of our detailed central vision, but is not representative of scale and distance

Originator: wisco3
 Updated Figure 02 DRAWINGS VP8 St Magnus' Hospital & Chapel (ems of 70102843-108-FG-SA-00008_R2.indd
 WIP Onshore Visualisations 2023-07-14 - Updated Figure 02
 ScotWind Project Wildebeest 03
 Projects\70090532 - ScotWind Project Wildebeest 03
 central data\Projects\70090532 - ScotWind Project Wildebeest 03



Baseline photograph

This image provides landscape and visual context only



Wireline drawing

View flat at a comfortable arm's length

OS reference:	E315876, N954863	Horizontal field of view:	90° (cylindrical projection)	Camera:	Sony Alpha 7R III
Eye level:	99.6 m AOD	Principal distance:	522mm	Lens:	Sony FE 50mm F1.8
Direction of view:	331	Paper size:	841mm x 297mm (half A1)	Camera height:	1.5m AGL
Distance to Site:	1,183 m	Correct printed image size:	820 x 130mm	Date and time:	23/03/2023 11:34



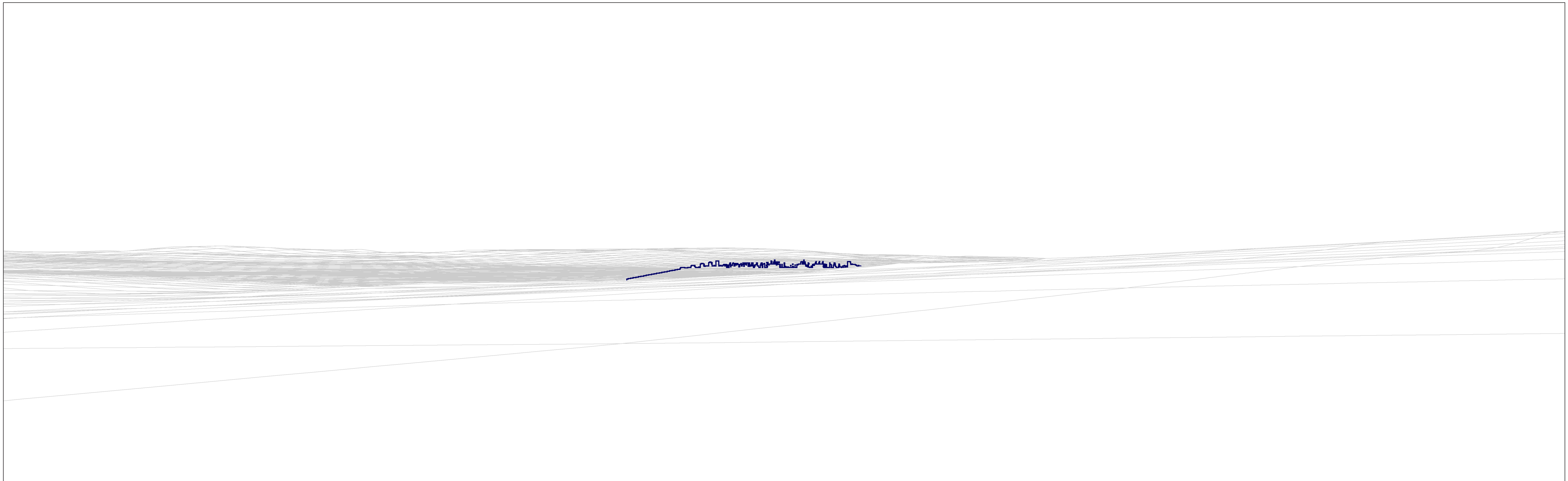
Client
Spittal Substation
EIA Report

Figure 17-VP8b
Viewpoint 8: St Magnus' Church
Existing View and Wireline - 90°

September 2023



Originator: wis03
70102843-108-FG-SA-01008_R2.indd
Updated Figures 02
DRAWINGS\VP8 St Magnus' Hospital & chapel
WP Onshore Visualisations\2023-07-14 -
ScotWind Project Wireline\03



Wireline drawing

View flat at a comfortable arm's length

OS reference:	E315876, N954863	Horizontal field of view:	53.5° (planar projection)	Camera:	Sony Alpha 7R III
Eye level:	99.6 m AOD	Principal distance:	812.5mm	Lens:	Sony FE 50mm F1.8
Direction of view:	331	Paper size:	841mm x 297mm (half A1)	Camera height:	1.5m AGL
Distance to Site:	1,183 m	Correct printed image size:	820 x 260mm	Date and time:	23/03/2023 11:34



Client
Spittal Substation
EIA Report

Figure 17-VP8c
Viewpoint 8: St Magnus' Church
Wireline - 53.5°

Originator: wis03
 \uk.wspgroup.com\central\data\Projects\70090000\170090532 - ScotWind Project\Visualisations\2023-07-14 - Updated Figures\02 DRAWINGS\VP8 St Magnus' Hospital & Chapel (ems of 7002843-108-FG-5A-00008_R2.indd



Photomontage

View flat at a comfortable arm's length

OS reference:	E315876, N954863	Horizontal field of view:	53.5° (planar projection)	Camera:	Sony Alpha 7R III
Eye level:	99.6 m AOD	Principal distance:	812.5mm	Lens:	Sony FE 50mm F1.8
Direction of view:	331	Paper size:	841mm x 297mm (half A1)	Camera height:	1.5m AGL
Distance to Site:	1,183 m	Correct printed image size:	820 x 260mm	Date and time:	23/03/2023 11:34

Client

Spittal Substation
EIA Report

Figure 17-VP8e
Viewpoint 8: St Magnus' Church
Year 15 Visualisation

September 2023



Figure 17-VP8f
Viewpoint 8 St Magnus' Church
Existing View - 50mm

Distance to the site: 1,183m Camera: Sony Alpha 7R III Focal Length: 50mm Camera height: 1.5m Date: 11:34 23/03/2023

When viewed at a comfortable arm's length (approx. 500mm), this printed image is representative of our detailed central vision, but is not representative of scale and distance



Figure 17-VP8g
Viewpoint 8 St Magnus' Church
Year 1 Visualisation - 50mm

Distance to the site: 1,183m Camera: Sony Alpha 7R III Focal Length: 50mm Camera height: 1.5m Date: 11:34 23/03/2023

When viewed at a comfortable arm's length (approx. 500mm), this printed image is representative of our detailed central vision, but is not representative of scale and distance



Figure 17-VP8h
Viewpoint 8 St Magnus' Church
Year 15 Visualisation - 50mm

Distance to the site: 1,183m Camera: Sony Alpha 7R III Focal Length: 50mm Camera height: 1.5m Date: 11:34 23/03/2023

When viewed at a comfortable arm's length (approx. 500mm), this printed image is representative of our detailed central vision, but is not representative of scale and distance



Figure 17-VP8i
Viewpoint 8 St Magnus' Church
Existing View - 75mm

Distance to the site: 1,183m Camera: Sony Alpha 7R III Focal Length: 75mm Camera height: 1.5m Date: 11:34 23/03/2023

When viewed at a comfortable arm's length (approx. 500mm), this printed image is representative of our detailed central vision, but is not representative of scale and distance



Figure 17-VP8j
Viewpoint 8 St Magnus' Church
Year 1 Visualisation - 75mm

Distance to the site: 1,183m

Camera: Sony Alpha 7R III

Focal Length: 75mm

Camera height: 1.5m

Date: 11:34 23/03/2023

When viewed at a comfortable arm's length (approx. 500mm), this printed image is representative of our detailed central vision, but is not representative of scale and distance



Figure 17-VP8k
Viewpoint 8 St Magnus' Church
Year 15 Visualisation - 75mm

Distance to the site: 1,183m Camera: Sony Alpha 7R III Focal Length: 75mm Camera height: 1.5m Date: 11:34 23/03/2023

When viewed at a comfortable arm's length (approx. 500mm), this printed image is representative of our detailed central vision, but is not representative of scale and distance