



Offshore Wind Power Limited

West of Orkney Windfarm Onshore EIA Report

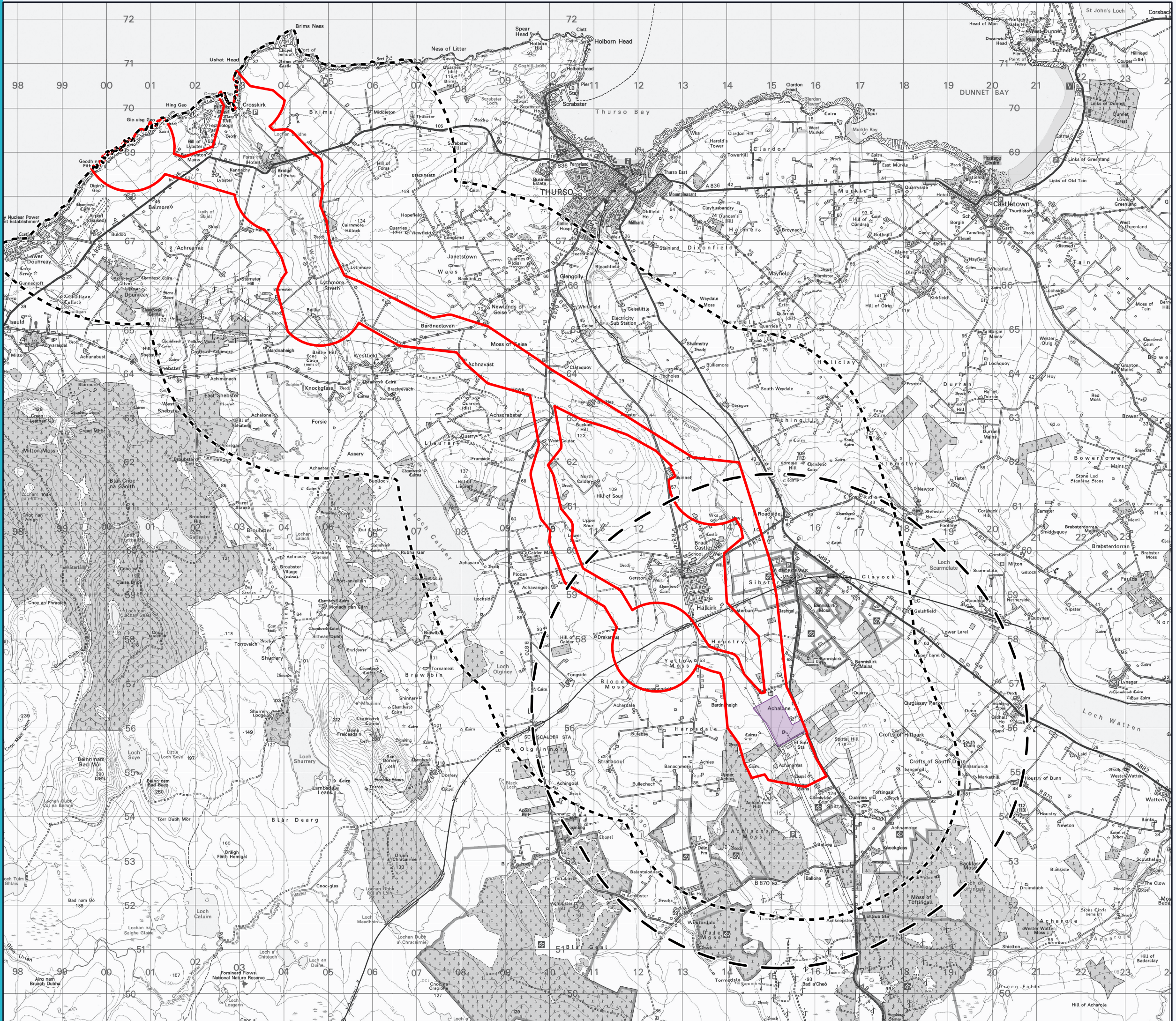
Volume 2, Supporting Study 17: LVIA Figure Pack

WO1-WOW-CON-EV-RP-0117: Approved by S.Kerr



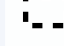

Document Control 20/10/2023

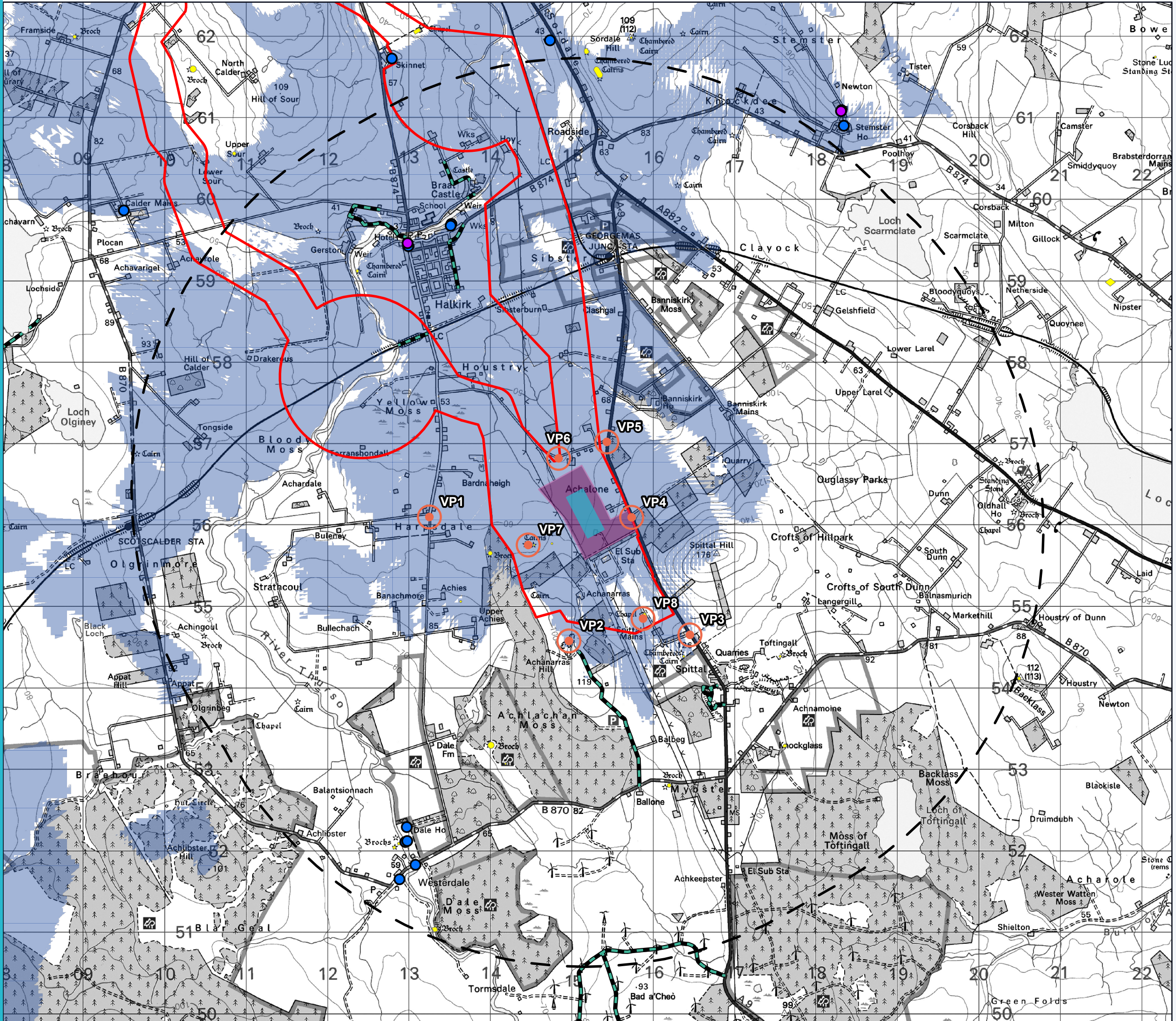
ASSIGNMENT L100632-S06
DOCUMENT L-100632-S06-A-REPT-019





Site Location Plan

-  Onshore substation search area
-  Onshore Project area
-  3km cable route study area
-  5km substation study area



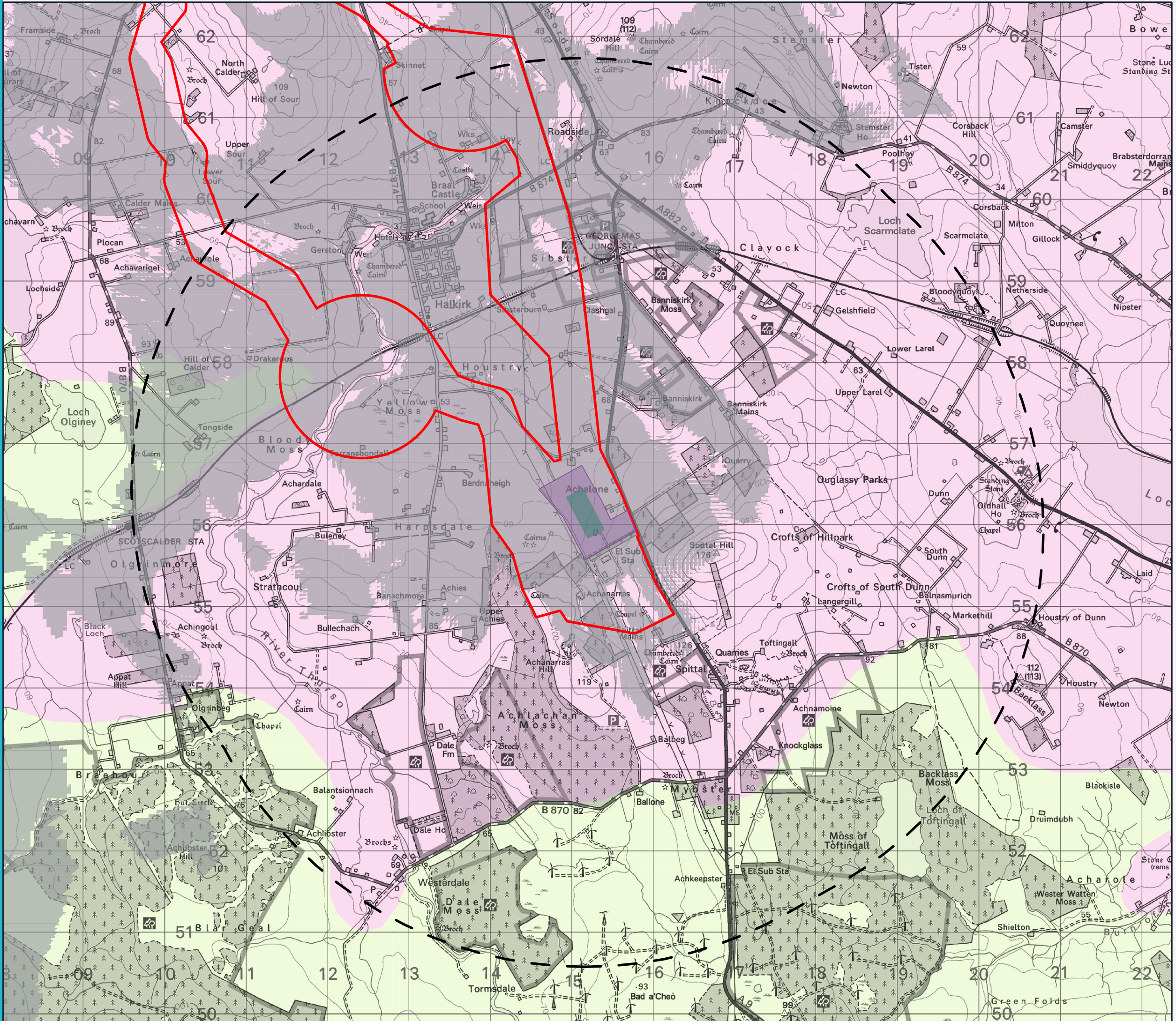
Note:
The ZTV is calculated based on the platform extents up to a height of 13.5m (i.e. 83.5m AOD) as a worst case scenario from a viewing height of 1.6m above the ground level.

The terrain model assumed bare ground and does not take into account the potential screening effects of vegetation and buildings. It is derived from OS Terrain 50m and 5m height data.

Earth curvature and atmospheric refraction have been taken into account.

ZTV and Visual Receptors: Substation

- Indicative substation location
- Onshore substation search area
- 5km substation study area
- Onshore Project area
- Core paths
- Listed buildings**
- B
- C
- Viewpoints
- Scheduled monuments
- Zone of theoretical visibility



Note:
The ZTV is calculated based on the platform extents up to a height of 13.5m (i.e. 83.5m AOD) as a worst case scenario from a viewing height of 1.6m above the ground level.

The terrain model assumed bare ground and does not take into account the potential screening effects of vegetation and buildings. It is derived from OS Terrain 50m and 5m height data.

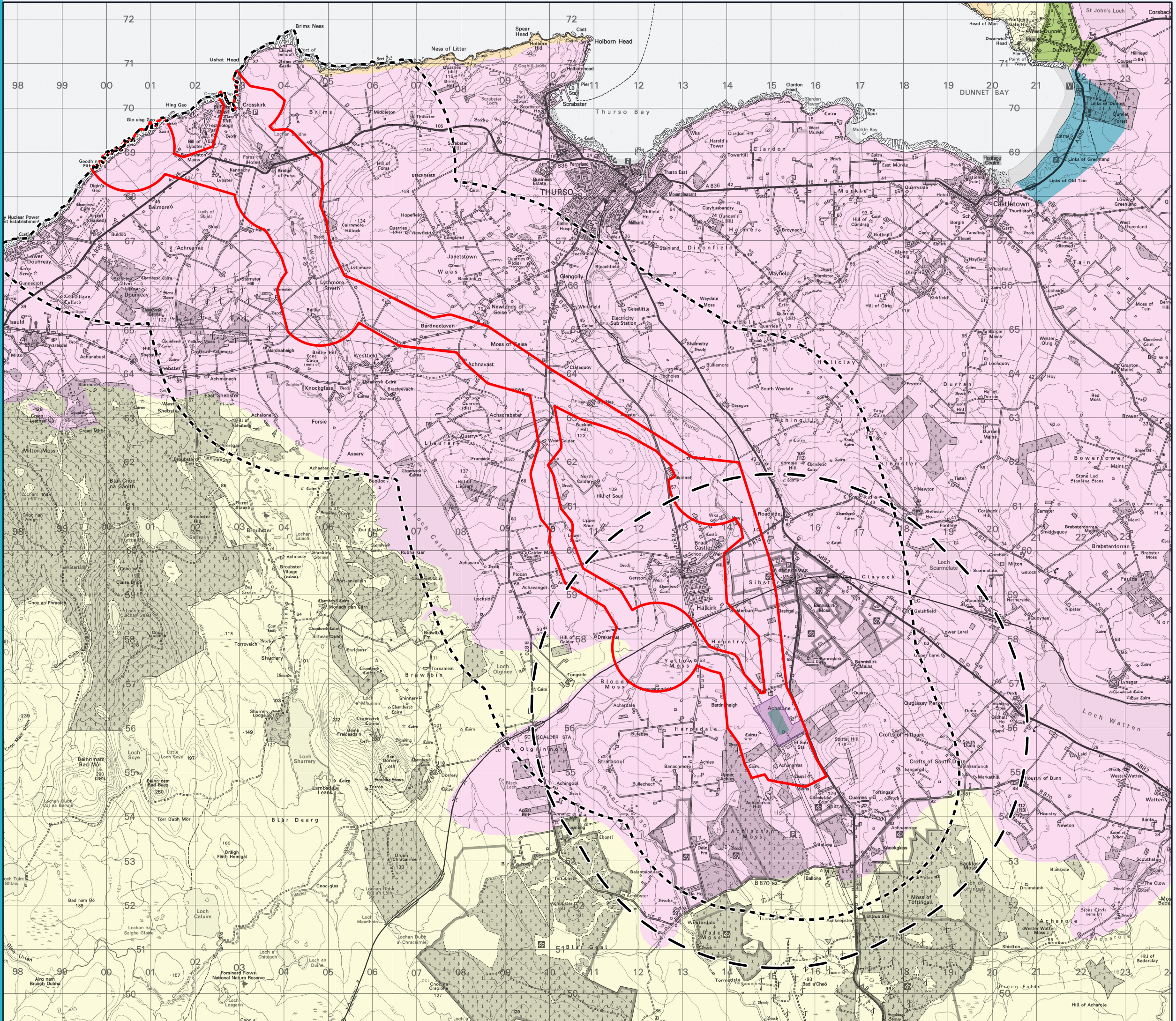
Earth curvature and atmospheric refraction have been taken into account.

Landscape Character: Substation

- Indicative substation location
 - Onshore substation search area
 - Onshore Project area
 - 5km substation study area
 - Zone of theoretical visibility
- Landscape character types**
- 134 Sweeping moorland and flows
 - 143 Farmed lowland plain

Figure 17-3



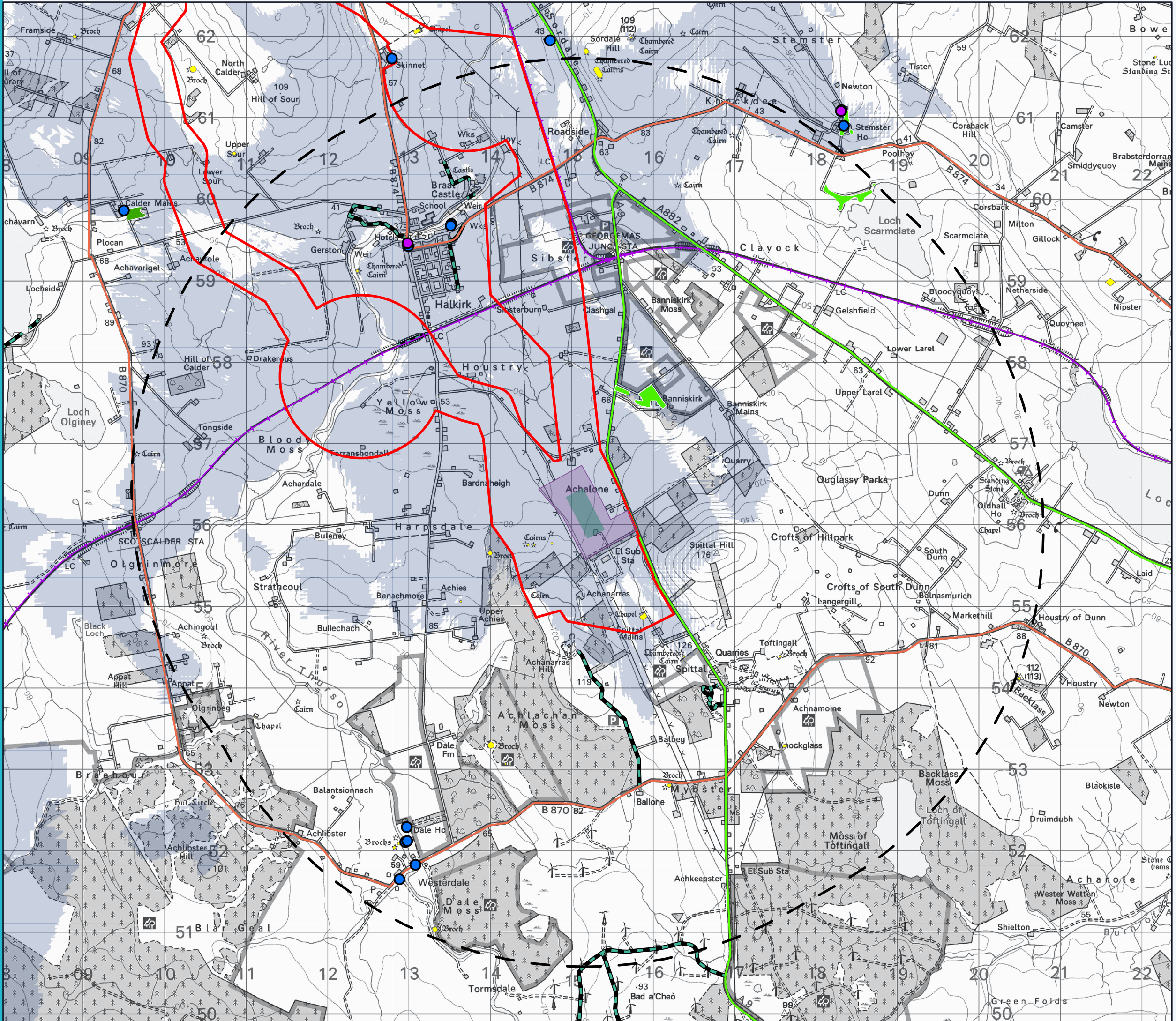


**Landscape Character:
Onshore Project**

- Indicative substation location
- Onshore substation search area
- Onshore Project area
- 3km cable route study area
- 5km substation study area

- Landscape Character Types**
- 134 sweeping moorland and flows
 - 140 Sandy beaches and dunes
 - 141 High cliffs and sheltered bays
 - 143 Farmed lowland plain
 - 144 Coastal crofts & small farms

Figure 17-4
 © Crown copyright and database right 2022 Ordnance Survey 0100031673.
 Landscape Character Types (Source: NaturalScot Landscape Character Assessment 2019)



Note:
The ZTV is calculated based on the platform extents up to a height of 13.5m (i.e. 83.5m AOD) as a worst case scenario from a viewing height of 1.6m above the ground level.

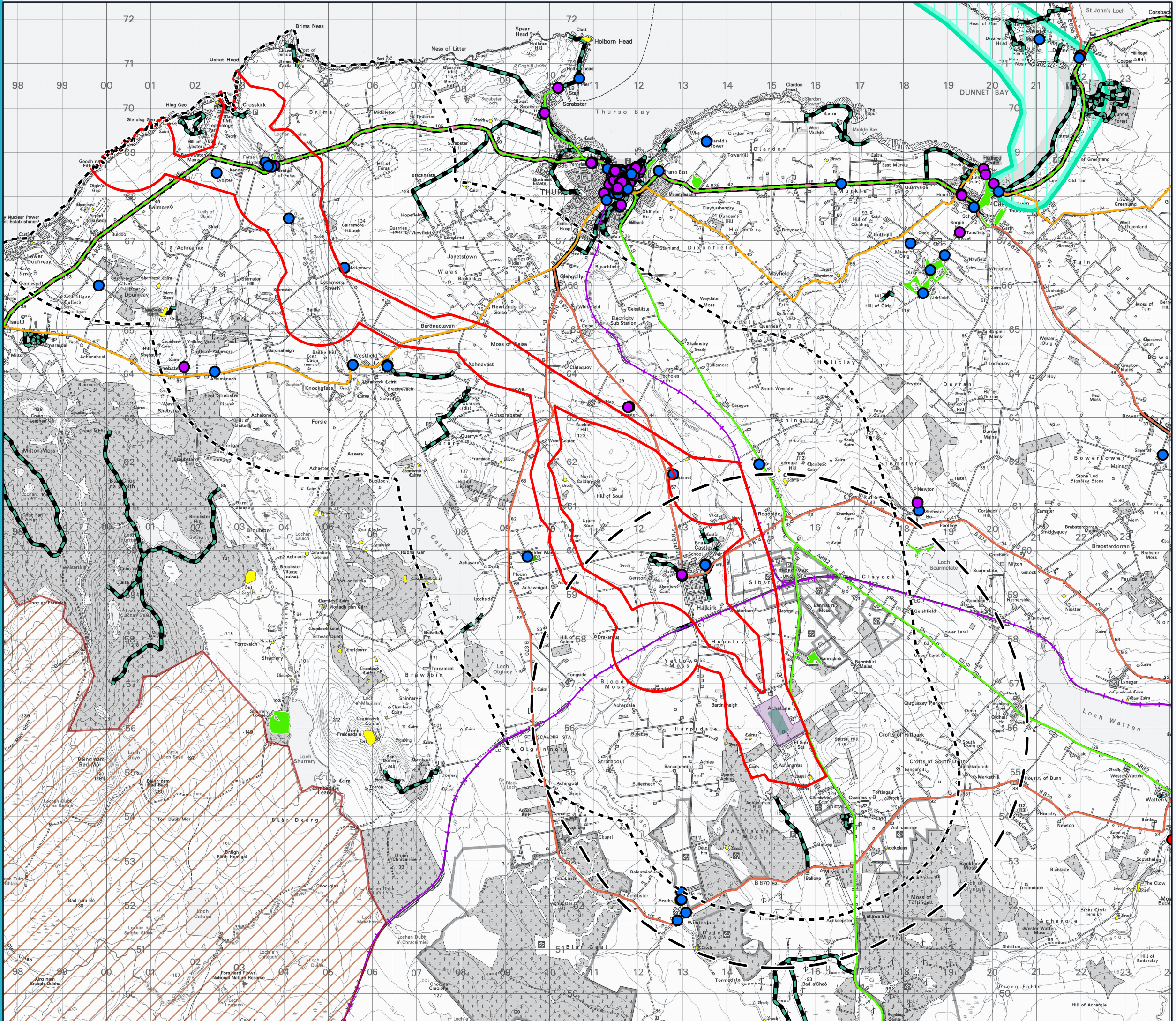
The terrain model assumed bare ground and does not take into account the potential screening effects of vegetation and buildings. It is derived from OS Terrain 50m and 5m height data.

Earth curvature and atmospheric refraction have been taken into account.

Landscape Designations: Substation

- Indicative substation location
- Onshore substation search area
- Onshore Project area
- 5km substation study area
- Listed buildings**
- B
- C
- Railway
- Primary A road
- B road
- Core paths
- Scheduled Monuments
- Zone of theoretical visibility
- Ancient woodland inventory**
- Ancient (of semi-natural origin)
- Long-Established (of plantation origin)

Figure 17-5



Landscape Designations: Onshore Project

- Indicative substation location
 - Onshore substation search area
 - Onshore Project area
 - 3km cable route study area
 - 5km substation study area
- Listed buildings**
- A
 - B
 - C
- Sustrans national route
 - Primary A road
 - B road
 - Railway
 - North coast 500
 - Core paths
 - Special landscape areas
 - Scheduled monuments
 - Wild land areas
- Ancient woodland inventory**
- Ancient (of semi-natural origin)
 - Long-Established (of plantation origin)

Figure 17-6

© Crown copyright and database right 2022 Ordnance Survey 0100031673.